

Driving Integration

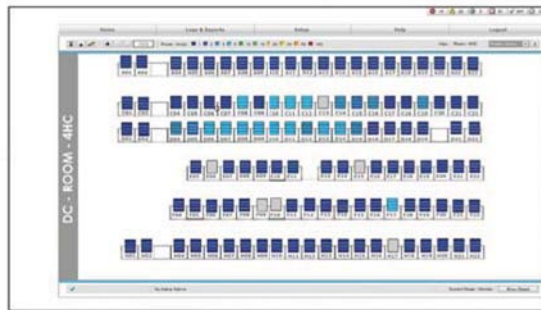
Enterprise Device Manager

Device Management & Control

Enterprise Device Manager is an enterprise-level device monitoring, control and asset management application. This web-based application allows users to monitor and control hundreds or even thousands of devices from a single console. Through its secure web interface, you can view the infrastructure from any browser within the company intranet.

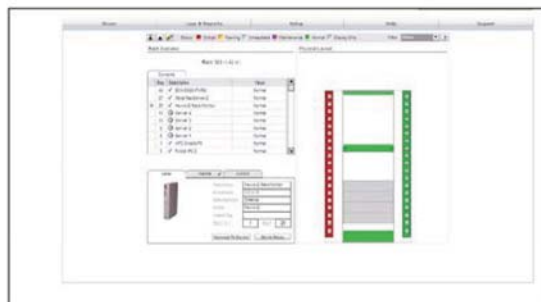
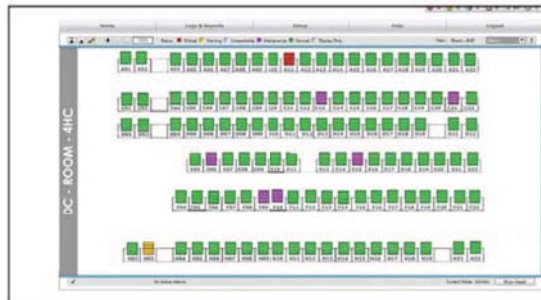
Attractive, Intuitive Layout

- Real-world representation of your infrastructure
- Import your own data centre layout
- Drill down to the rack level



Easy to Use

- Clear, easy to read intuitive screens using Macromedia Flash with real-time updating
- Automatically discovers supported devices
- Minimal SNMP knowledge required (no MIB compilation)
- Configurable hierarchy allows you to easily group devices by location, type or function



Logging

- Provides individual device log files for trending and event logging purposes.
- Users can easily manage inventory and create and save custom reports.

Intelligent Alarm Processing

- Only active alarms are displayed in the alarm viewer (all alarms are saved to log file).
- Recognises when an alarm condition has cleared and automatically updates the alarm display and event log.

Global Sets

- Configure multiple devices with a single click.

Multi-Protocol Support

- SNMP
- Telnet
- Web (secure and non-secure)
- XML
- Modbus

Driving Integration

Features

Device Discovery	Automatically discovers SNMP devices, Business Edition UPS software, secure and non-secure Web servers, Telnet devices and more. Support is also included for manually adding non-discoverable devices.
Topology Layout	Configurable hierarchy structure allows you to easily group devices by location, type or function. Support for nested groups allows you to design a topology that fits your needs.
Advanced Layout View	Create customised layouts by choosing the size and position of device icons. Import your own background images to fully customise your layout.
Detailed Rack View	Drill down to the rack level to view rack contents and status of all rack devices.
Real-Time Alarm Monitoring	Macromedia Flash interface provides real-time updating without screen refresh.
Accessible from any Browser	View the status of your infrastructure from any browser on your company intranet.
Security	Secure Sockets Layer (SSL) support for web security.
Extensive Reporting	View summary and detailed event logs, inventory reports, and device parameters. Create and save custom reports. Configure recurring reports to be sent automatically via email.
SNMP	Notification Send SNMP traps to multiple trap receivers when events occur.

Intelligent Alarm Processing	When an alarm condition clears, the active alarm will be automatically removed from the alarm viewer. There is no need to manually clear every alarm as is required for many network management systems.
Broadcast Notification	Send broadcast messages to multiple recipients when events occur.
Email/Pager Notification	Send email or alphanumeric pages to multiple recipients when events occur. Select working days and hours for email/pager recipients so they will only receive notification when it is appropriate.
Alarm Escalation	Escalate alarms if not resolved after a selected period of time.
Centralised Configuration	Configure hundreds of devices at the same time using Enterprise.

System Requirements

Operating Systems	Supported Windows 2000 (Service Pack 4 or higher) Windows XP Professional (Service Pack 1 or higher) Windows 2003 Server Enterprise Edition.
Web Browsers Supported	Internet Explorer 6.0 (Service Pack 1) Macromedia Flash 7.0.
Database	MSDE 2000 (Service Pack 3) – included with the software.