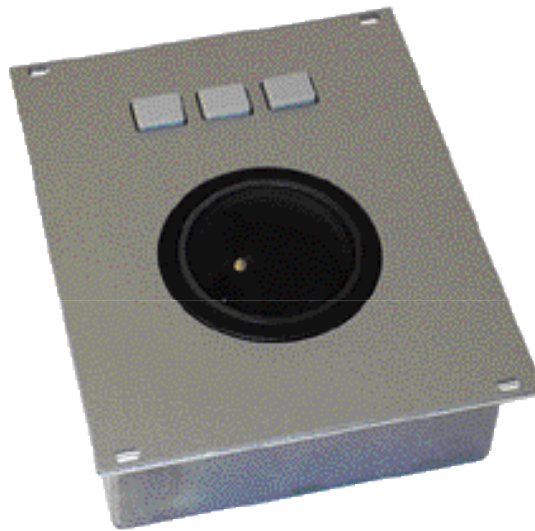


Industrial Trackballs

TKH-TK50-FP-PS/2
Industrial Trackball With 50mm Ball



Excellent Features:

- ✓ Industrial trackball build-in module for harsh environment
- ✓ Suitable for integration into 19"-front panels
- ✓ Extra large ball (d= 50 mm) for exact positioning
- ✓ Water- and dust-protected (IP54; IP65 static)
- ✓ Silicone mouse-switches with tactile feedback
- ✓ PS/2-mouse compatible with 3 mouse-switches (RS232 by adaptor)
- ✓ Surface made of Aluminium
- ✓ Backside with electronic fully covered
- ✓ Frontside-integration by 4 holes
- ✓ Customized frontpanel layout on request

Keyboard Specification:

Electronic interface:	PS/2 mouse port (RS232 by adaptor)
Connector:	6-pin MiniDIN (9-pin Sub-D by adaptor)
Cable length:	55.1" / 1400 mm
Dimensions:	5.055" x 4.185" x 4.055" 128.4 x 106.3 x 103 mm (21TE, 3 HE)
Ball diameter:	1.97" / 50.8 mm
Tracking force:	50 g typ.
Keys:	3 Silicone keys
Protection level:	IP54 (IP65 static)
Operating temperature:	32° F to 122° F / 0° C to 50° C